

HFT Prop Firm EA is a EA designed to pass evaluation of proprietary trading firm challenges that allow use of High Frequency trading technique.

HFT Prop Firm EA is able to hit profit target within a short period of days with very low drawdown. In some cases, profit target of 1 phase can be achieved within 1 trading day. We use special AI strategy that detect large movements and employ stop loss to protect your equity. It has build-in equity protector and a notifier which send you a notification on your mobile MetaTrader app when it hit profit target.

It comes with a power profit based money management strategy, this unique features enable you to reach challenge profit target faster without incurring extra high drawdown, we call it Profit Ratio Money Management (PRMM).

Please read this document carefully, all the information for successful passing of prop firm is here.

Prop Firm Challenges to be used with HFT Prop Firm EA should be the type which allow HFT (High Frequency Trading). Please confirm which challenge or evaluation allow HFT with your prop firm.

Social Trading Club Funding (Tested with HFT Prop Firm EA and pass, when I have the funded account, I will mark it as recommended)

MDP Funding (Not tested with HFT Prop Firm EA, so we cannot recommend, try at your own risk)

Next Step Funded (tested with HFT Prop Firm EA and passed, **NOT recommended now**, high slippage introduced recently)

VPS

Fast VPS is needed. 20ms or less latency is ok for most cases or prop firm, 3ms or less latency is highly recommended.

FXVM is highly recommended, if your broker server is in New York, choose New York location server, if your broker server is in London, choose London when you signup with FXVM.

FXVM is giving 7 days full function free trial for new signup and plus 20% discount code with (FXVM20) when you sign up with this link:

<https://fxvm.net/?aff=15159>

FXVM Lite VPS (Windows Server 2016) at New York location is recommended for Nova and Infinity Prop Firm. 7 day of free trial you can pass at least 7 Nova or IFF accounts !

Setting

Money Management Mode (Fixed Lot Size or Profit Ratio Money Management)

-----Fixed Lot-----

Fixed Lot Size (start with 0.02 lot for every 25k and up to 10 lot for every 25k, use 0.02 first)

Account Size	Starting	Nominal	Aggressive
5000	0.01	2.5	5
10000	0.01	5	10
25000	0.02	12.5	25
50000	0.02	25	50
100000	0.05	50	100
200000	0.05	75	150
300000	0.1	100	200
500000	0.1	150	300

This table is good for Nova and IFF evaluation.

Account Size	Starting	Nominal	Aggressive
25000	0.01	1	1
50000	0.02	2	2
100000	0.03	4	4
200000	0.04	8	8

This table is good QuanTec evaluation.

-----Profit Ratio Money Management (PRMM)-----

Prop Firm Account Size (Account size of your prop firm account)

Minimal Profit in % to start Profit Ratio (At which percentage of profit PRMM starts)

Lot Size increase per 1000\$ of profit; (use half of the figure of Fixed Lot Size)

=====Account Management=====

Pause EA when Today Max Drawdown hit (Drawdown of the day to pause EA when reach profit in \$)

Account Size	Max Daily DD
5000	5
10000	10
25000	25
50000	50
100000	100
200000	200
300000	300
500000	500

Stop EA when Account Balance achieved (Account Balance to stop EA when reach profit target in \$)

=====Trades=====

Max Spread (Max Spread this EA start to work)

Magic Number

=====SL, TP and Trailing Stop=====

Stop Loss (Point)

Take Profit (Point)

Trailing Stop (point)

Trailing Step (point)

Trailing Start Above Breakeven (point)



For Free Forex EA, Indicators and more Visit
ForeXCracked.com

Join Our Telegram Group Chat To Discuss Further About These.

>>>> <https://t.me/fxcracked>

Free trading system, Reviews of Brokers, EA and more.

>>>> <https://www.fxcracked.com>

Our forum

>>>> <https://www.JustForForex.com>

Our Discord Channel



>>>> <https://discord.gg/43P5CRk>

Reliable and Trusted FOREX VPS

>>>> <https://fxvm.net/>

Our Trusted Broker List



>>>> <http://bit.ly/Trusted-Brokers>

	Min Deposit of 5\$ Allow Cent Account Levergae up to 1:888	Register
	Min Deposit of 20\$ Allow USA Traders Levergae up to 1:500	Register

Trusted Forex Signals

	 trade_with_sam Earn While Learn ★★★★★ 5.0 (41 reviews)	FOREX SIGNALS 600 to 800 Pips Weekly 90% Accurate
--	---	--

Free 30\$ No Deposit Forex Bonus

Get your \$30 Trading Bonus*	 
<small>*T&Cs apply. Forex and CFD trading is high risk and can result in the loss of all your invested capital.</small>	Open an Account

=====Strategy=====

Use EMA as Trend Confluence (True or False)

EMA Period (3 to 50)

Surge Offset (above 20)

Range Level (above 35)

Gap for Surge (2 to 5)

When appears beside Range Level and Surge Offset , means current market conditions is not suitable for the EA, the EA will wait till the right condition to open trade and by then there is no at the display.

OpenSpeed (1 to 20, 1 is fastest, 1 to 2 may be too fast for your broker server, this should be avoided)

If servers warn hyperactivity or Over-Request, change this value to 12 to 20

=====Day and Time Restriction=====

-----Time Allow-----

Time to use HFT Prop Firm EA is best around London Session into Late USA session, 4 hours before market close. The Time here refers to the broker server time, which you can check on the chart which you have loaded HFT Prop Firm EA or you can find the time in Market Watch.



Symbol	Bid	Ask
US30	34663.26	34664.86
GER30	15804.52	15806.72
FRA40	7284.46	7285.66
HK50	18119.76	18127.36

Start From Hour (Hour to start the EA)

Start From Minute (Minute to start the EA)

End at Hour (Hour to end the EA)

End at Minute (Hour to end the EA)

-----Day Allow-----

Allow Monday

Allow Tuesday

Allow Wednesday

Allow Thursday

Allow Friday

Allow Saturday

Allow Sunday

Variable	Value
=====Money Management=====	
Money Management Mode	Fixed Lot
Fixed Lot Size	0.01
Profit Ratio Money Management (PRM...)	
Prop Firm Account Size	200000.0
Minimal Profit in % to start Profit Ratio	1.0
Lot Size increase per 1000\$ of profit	0.25
=====Account Management=====	
Pause EA when Today Max Drawdown hit	500.0
Stop EA when Account Balance achieved	220500.0
=====Trades=====	
Max Spread	160.0
Magic Number	169650
=====SL, TP and Trailing Stop=====	
Stop Loss (Point)	15.0
Trailing Stop (point)	20.0
Trailing Step (point)	10.0
Trailing Start Above Breakeven (point)	5.0
=====Strategy=====	
Use EMA as Trend Confluence	false
EMA Period	5
Surge Period	7
Surge Offset	25.0
Range Level	20.0
Gap for Surge (point)	2
OpenSpeed (1 to 20, 1 is fastest)	2.0
=====Day and Time Restriction=====	
Time Allow	
Start From Hour	9
Start From Minute	0
End at Hour	22
End at Minute	59
Day Allow	
Allow Monday	true
Allow Tuesday	true
Allow Wednesday	true
Allow Thursday	true
Allow Friday	true
Allow Saturday	false
Allow Sunday	false

How to set the EA?

You can follow the instruction below to adjust the parameters of the EA or you can simply use the same files provided.

6 parameters you need to change accounting to you lot size

- Money Management Mode: Fixed Lot
- Fixed Lot Size: As Table 1
- Pause EA when Today Max Drawdown hit: x1 to x3 As Table 2
- Stop EA when Account Balance achieved: Starting Capital plus Profit Target
- Max Spread
- Magic Number (change to something different)

For example a 25k prop firm account, the profit target is 10%, the setting is as below:

Money Management Mode: Fixed Lot
Fixed Lot Size:

First Time User HFT Prop Firm EA User

Use 0.02 lot as a start, run for 30minutes in London session, when your setup is correct (particularly the VPS latency), you will see large Profit Factor, then increase it to 0.2 lot for next 15 minute and 2 lot to next 15 minute and increase to 12.5 lot within a few steps.

For experienced HFT Prop Firm EA User

You can start with 0.02 lot, let it run for 30minutes when you see good profit factor, set fixed lot size to lot size to 12.5lot. And even bigger 25lot.

Pause EA when Today Max Drawdown hit: As Table 2
\$25

Stop EA when Account Balance achieved: \$27500

This table fixed lot size is good for Nova, IFF and QuanTech HFT evaluation.

Account Size	Starting	Nominal	Aggressive
5000	0.01	2.5	5
10000	0.01	5	10
25000	0.02	12.5	25
50000	0.02	25	50
100000	0.05	50	100
200000	0.05	75	150
300000	0.1	100	200
500000	0.1	150	300

Table 1A This table is good for Nova and IFF evaluation.

Account Size	Starting	Nominal	Aggressive
25000	0.01	1	1
50000	0.02	2	2
100000	0.03	4	4
200000	0.04	8	8

Table 1B This table is good QuanTec evaluation.

Account Size	Max Daily DD
--------------	--------------

5000	5
10000	10
25000	25
50000	50
100000	100
200000	200
300000	300
500000	500

Table 2

And for **Max Spread** setting, it should be the value of Min Spread of Broker which you can find at the display.

I have included US30 set files for Nova, IFF and QuanTech HFT Account Size, 25k, 50k and 100k and 200k in this zip. They have been set with smallest starting lot and you just need to increase the fixed lot size when you see your setup is correct as large profit factor. Increase the lot size account as according to Table A to nominal value in a few steps. You can use the same set files for broker demo accounts, the minimal lot size maybe adjust automatically by HFT Prop Firm EA.

Symbol

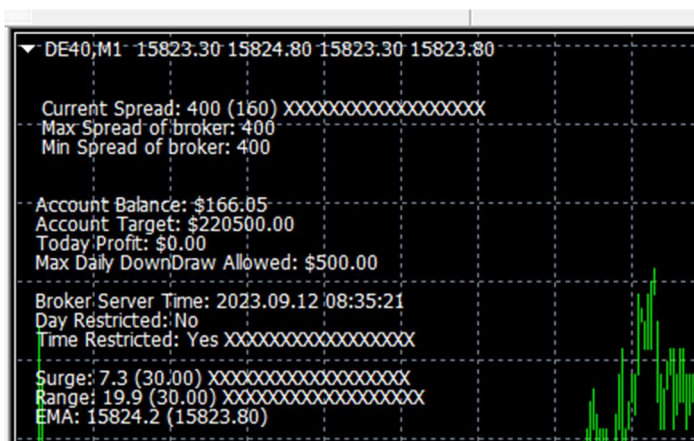
US30 (USA30ix, US30.i, WS30), GER30 (DE30) or other indices which your prop firm offers

US30 is highly recommended. Note: Use USA30ix for Nove Funding.

Timeframe

M1

Display



You can find the info as above. When you see XXXXXXXXXXXXXXXXXXXX beside a parameter, means the current value is out of the parameter. And if there is at least one XXXXXXXXXXXXXXXXXXXX, the EA will not open trades.

You can change Current Spread, Time and Day Restrictions in the EA setting.

Frequently Ask Question:

Question: What are the brokers account I can try HFT Prop Firm EA on before using it on my prop firm account?

Answer: We have tested a few brokers demo accounts and found these 2 brokers demo to be close to prop firm HFT account behaviour:

IC Markets: <https://icmarkets.com/?camp=52399>

Fusion Markets: <https://fusionmarkets.com>

Use these 2 broker RAW spread demo account for testing of HFT Prop Firm EA if needed.

There are many other broker demo account which works like prop firm HFT account, not limited to the above 2. If you find your broker demo account does not have big profit factor use one of the above 2 broker demo accounts. We do not support other broker demo account.

Questions: What is Profit Factor?

Answer: Profit factor is the sum of profits divide by sum of losses.

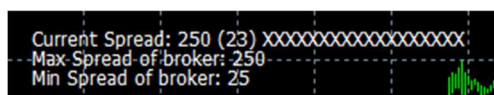
Question: Is Eightcap broker demo account works like a prop firm Eightcap evaluation account?

Answer: No, prop firm and broker can set different specification of demo account even though they use the same server. They can be set to have different spread, commission, slippage, mock filling and many others. If you use Eight Cap Broker Demo account to test this EA, you may not make profit, but it works very well with Prop Firm EightCap Demo Server.

Question: How do I know the spread of the symbol of my broker? What is the Max Spread value should I use in HFT Prop Firm EA?

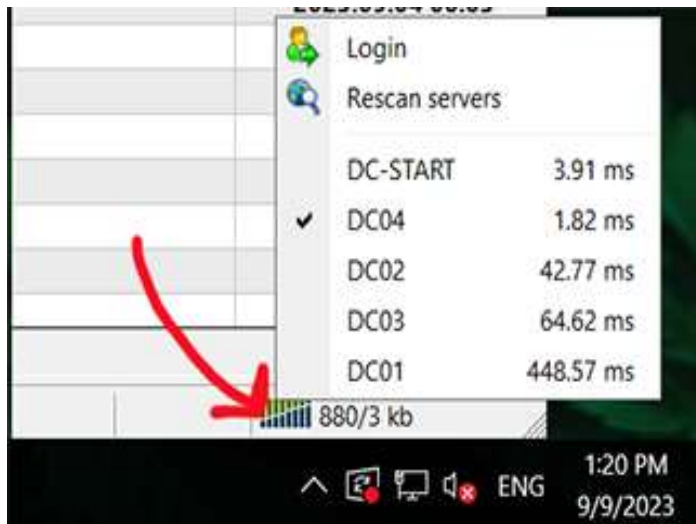
Answer: HFT Prop Firm EA display the maximum and minimum spread of a symbol of the period you load the EA. Use Min Spread of broker to set Max Spread in the EA setting. For example, Min Spread of Broker is 160 on the display, set 160 as Max Spread.

When XXXXXXXX appears means the current spread is higher then the Max Spread and the EA will not open trade. When spread is lower and same as what you have set, HFT Prop Firm EA will then trade, when other conditions met.



Question: How can I tell how fast is my VPS to broker server.

Answer: Click on this, it will show the latency (ping) from your VPS to your broker server. Choose the fastest broker server.

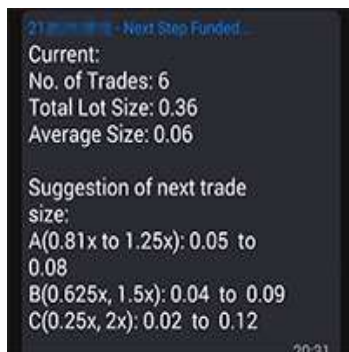


Question: My EA is not trading, what can I do?

Answer: Check on the chart display of what is displaying XXXXXXXXXXXX, this is the condition not met, not reached or not enabled and that's why the EA is not trading or not trading yet.

Question: Is there anything I need to take note when trading in funded account?

Answer: You need to take note of lot size consistency, if you do not trade within the lot size of average 0.25x to 2x (this number may vary with different prop firm), those trades fall outside this range, the prop firm will not pay. To help my buyer to stick with the lot size consistency, I provide a free MT4 Lot Size Consistency Utility for free for those give reviews on HFT Prop Firm EA.



Such information is displayed at your desktop Metatrader 4 and send to your Mobile MT4/5 as notification, advising you what is the next trade lot size, so you can be consistent with prop firm rule.

Question: My prop firm send me a email saying the EA has over request daily target, what can I do?

Answer: Set OpenSpeed according to this:

OpenSpeed (1 to 20, 1 is fastest, 1 to 2 may be too fast for your broker server, this should be avoided)

If servers warn hyperactivity or Over-Request, change this value to 12 to 20

Then write to you prop firm, to tell them you have lower the request number. They will either resume your account or give you new password. This is no big deal, just that prop firm so called HTF server cannot take high frequency orders.

Should you have question feel free to ask me. Before you approach me, please read this document thoroughly and make sure you are using or plan to use the above recommended prop firm sor broker demo accounts. I am not able to provide support to other broker demo accounts in any case.

29/9/2023